



Bathtub - VAIA

Two-hole tub mixer for freestanding installation with hand shower set - polished chrome

Article number: 25 943 819-00



- 8-3/4" Projection
- Swiveling spout 360°
- Hand shower: Standard spray
- Spout: Round aerated stream
- Hand shower with descaling system
- Tub / shower diverter
- Total height 36-1/4"
- Riser height 24-3/4"
- Height to aerator/spout outlet 32-1/8"
- Flanges Ø 3-7/8"
- Center to center 5-7/8"
- Metal shower hose 49-1/4" with anti-twist device
- Hand shower to be mounted on right pillar
- Water flow rate limited to max. 6.5 gpm
- Hand shower water flow rate limited to max. 1.8 gpm
- Fittings group in compliance with DIN 4109: 1
- Internal backflow preventer.
- (ADA)
- NOTE: Local building codes may require the use of an anti-scald device. Please refer to remote pressure balance valve (35 910 970 90)



polished chrome

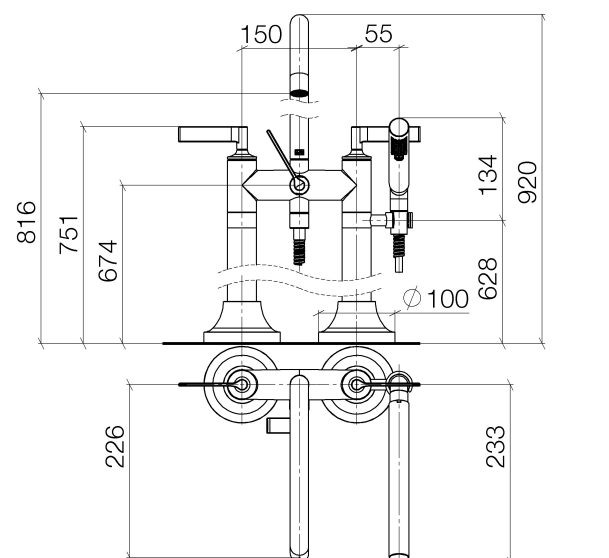
Accessory is required for this item.

Bathtub - VAIA

Two-hole tub mixer for freestanding installation with hand shower set - polished chrome

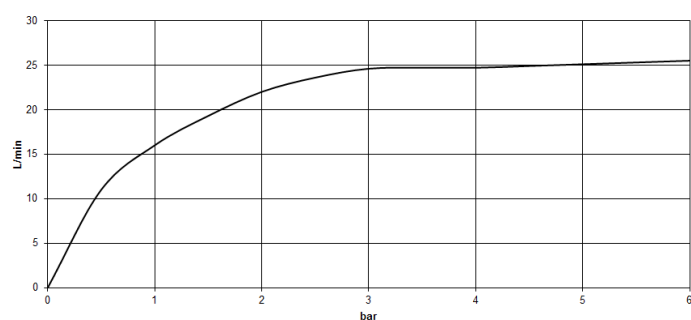
Article number: 25 943 819-00

Dimensional drawing



All dimensions in mm / inch = mm x 0,0394

Flow rate chart



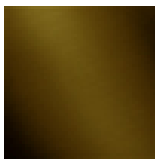


Bathtub - VAIA
Two-hole tub mixer for freestanding installation with hand shower set - polished chrome
Article number: 25 943 819-00

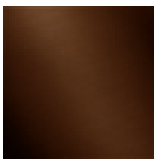
Other surface finishes



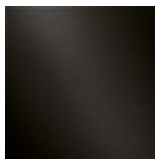
platinum matte
25 943 819-06



Dark Brass matte
25 943 819-16



Dark Bronze matte
25 943 819-17



Dark Platinum matte
25 943 819-99

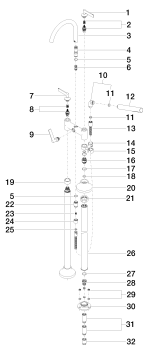
More custom finish options are available via special production (xTra Service). Please see our finish matrix for availability and pricing or contact a Dornbracht representative.

Required article



35 944 970-90 0010
Floor mounting rough set -

Spare parts list



Number	Item Number	Designation	Number of units
--------	-------------	-------------	-----------------